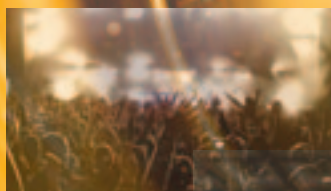


# Anycast Touch

**SONY**  
make.believe



Touch the future  
of live production

Live Content Producer AWS-750

# Live Content Producer AWS-750

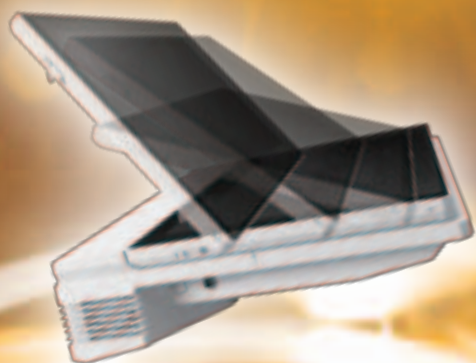
The Anycast™ Touch AWS-750 Live Content Producer is a powerful content creation tool for a wide range of live applications such as education, houses of worship, and corporate seminars.

With the all-in-one style featuring a double touch-screen, the Anycast Touch enables intuitive, easy operation, and eliminates the cumbersome setup and signal adjustment process typically required when connecting various devices. Users can also store the setup information of all attached video sources, such as the camera input, title data, and transition effects. Additionally, scene lists can be prepared beforehand, allowing users to simply switch scenes during an event with just a single tap.

With a variety of powerful functionalities packed in its compact size, the Anycast Touch is ideal for space-limited applications and helps meet and even exceed your production requirements.







# MAIN FEATURES

## ■ All-in-one Design

### 1 Video Switcher

- Up to six input sources are available
- Easy operation touch-screen system

### 2 Audio Mixer

- Up to five audio inputs can be mixed using simple touch-screen operation
- An audio delay function and an equalizer function are available

### 3 Display Incorporated

- All-in-one style system displays sources for input and streaming for simple operation

### 4 Streaming Function

- Stable streaming to an external streaming server

### 5 Recording Function

- Records PGM or AUX output in the built-in solid state drive (SSD) in high resolution; recorded files can be exported and edited by various types of non-linear editor

### 6 Media Player

- Plays back a movie file or still image file as an input source

### 7 Titler

- Operators can generate texts to overlay onto the program output with the touch-screen keyboard; 10 languages are available for the text typing tool

### 8 Camera Remote Control Capability

- The Anycast Touch allows operators to easily control one or more compatible pan/tilt/zoom cameras at remote locations; Sony offers a variety of compatible cameras such as BRC Series cameras\*

\*For available models, please contact your nearest Sony office or Sony authorized dealer.

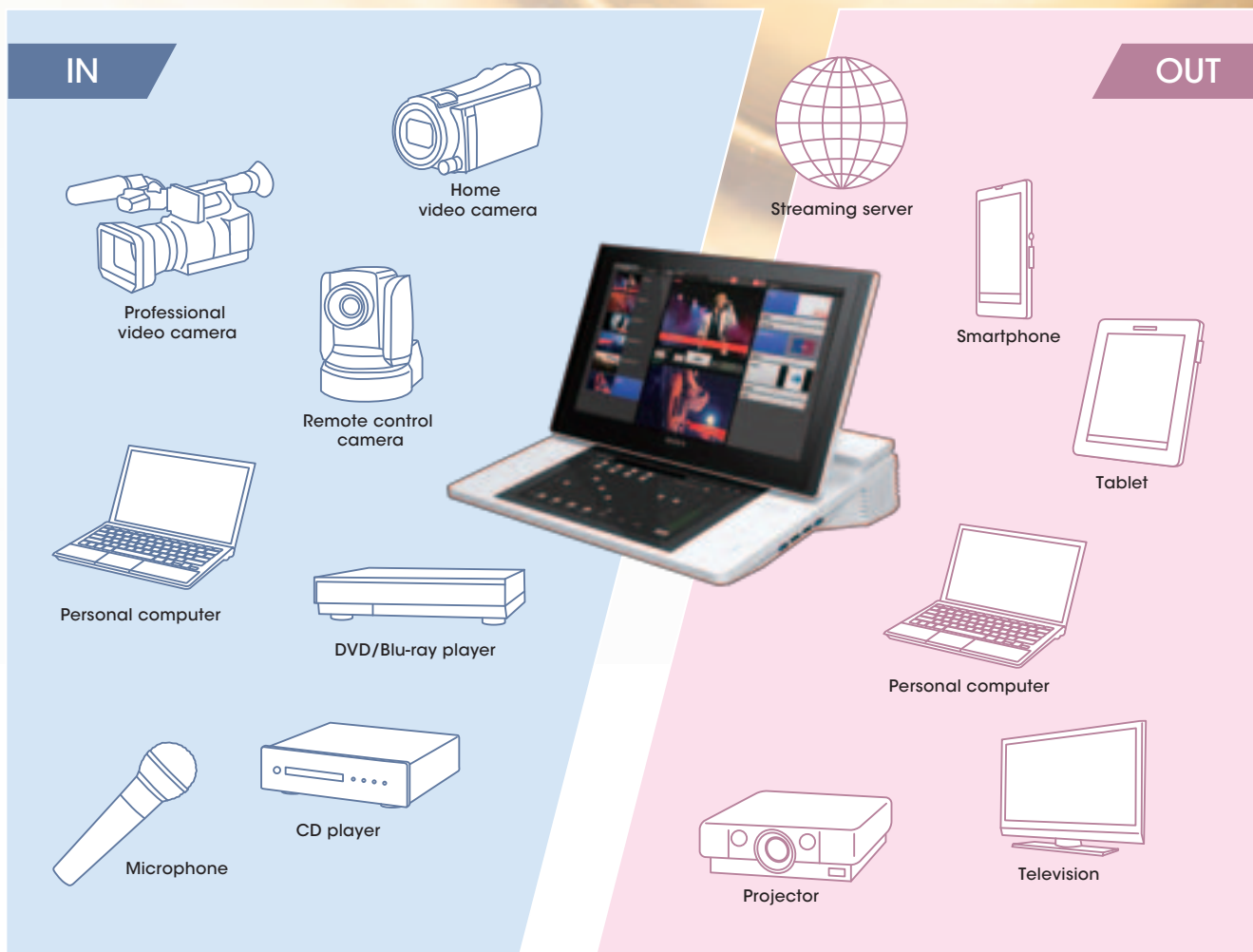
## ■ Applications



Corporate: conferences, seminars



Education: classrooms, assemblies



Flexible Connections for Diverse Applications



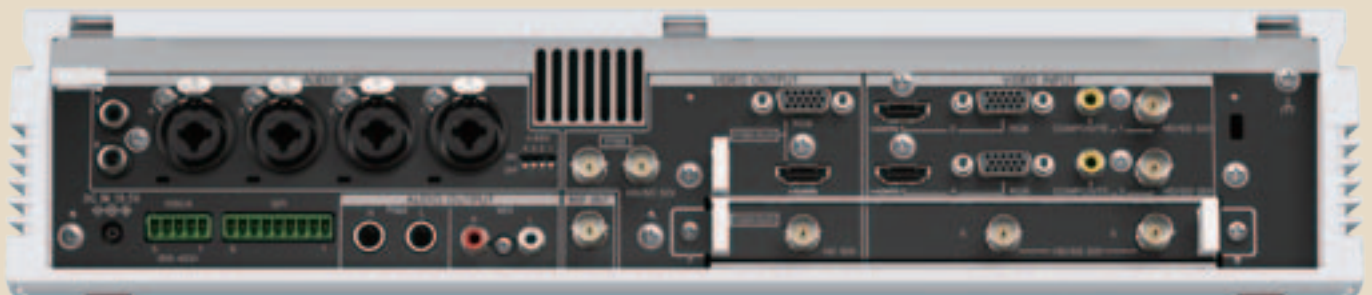
Special events: fashion show, concerts



Houses of worship: weddings, ceremonies



# MAIN FEATURES



Rear Panel

## 1 Scene

Up to 99 video sources can be stored in the scene folder with settings including titles, logos, and effects.

Operators can recall the next source just by touching its thumbnail picture.

## 2 Input

Up to 99 settings for input sources can be stored, such as external inputs, black and color bar signals, still picture files, and movie files.

## 3 PGM viewer

This displays the source currently distributed or presented as PGM.

## 4 Recording

This records PGM output in the built-in SSD.

## 5 Streaming

Stable streaming is available to an external streaming server.

## 6 TAKE

Tapping TAKE switches PGM to the source shown at NEXT.

## 7 NEXT viewer

This displays the next source selected for output after the transition.

## 8 Option

### Title

Up to two titles can be superimposed on the input source.

### Camera

Various settings on remote control cameras can be stored and recalled.

### Transition

Effects including mix and wipe can be applied when changing sources from the current PGM source to the next one.

### Effect

Up to two Picture-in-Picture effects and chroma key can be applied.

### Logo

Up to two still pictures can be applied as logos when up to 320 x 320 pixels.

### AUX

Can output a source in addition to the PGM source.

## 9 Sub display

Various settings including audio mixer and cameras are available. In addition, cameras can be controlled in pan, tilt, zoom, focus, and iris.

## 10 L,R button

Pressing the L or R button speeds the next source into PMG (this is also achieved by tapping the TAKE button).

## 11 Built-in stereo speakers



Left Side



Right Side

# Specifications

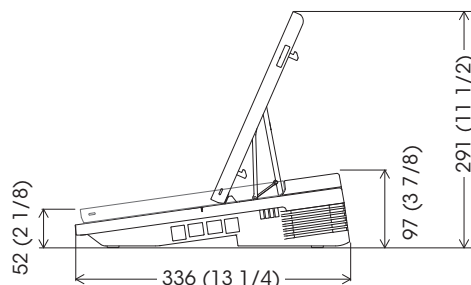
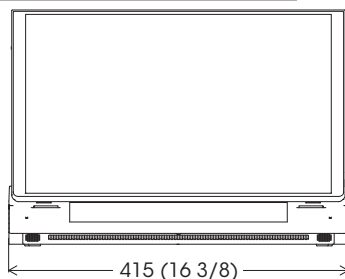
Video Signals Performance	
Video Process	10 bit, Y: 74.25 MHz, R-Y/B-Y: 37.125 MHz
SD Video Quantization and Sampling Frequency	8 bit, Y: 13.5 MHz, R-Y/B-Y: 6.75 MHz
REF OUT Frequency Accuracy	Less than 50 ppm
Audio Signals Performance	
Sampling Frequency	48 kHz (Audio Mixer)
Quantization	24 bit (A/D, D/A), 40 bit (DSP)
Frequency Response (MIC/LINE)	20 Hz to 20 kHz +0.5 dB to -2 dB
THD (MIC/LINE -20dBu 1kHz)	0.1% or less
Dynamic Range	90 dB or more
Supported Video Format	
System Format 59.94 Hz	1080/59.94i Hz, 480/59.94i Hz
System Format 50 Hz	1080/50i Hz, 576/50i Hz
Streaming Performance	
Format (Codec) / Protocol	Flash (H.264, AAC) / RTMP
Recording	
Recording Format	MPEG HD (.mxf)
Recording Source	PGM or AUX
Recording Media	Internal mSATA (192 GB)
Maximum Recording Duration	About 10 hours, Up to 6 hours per file
Media Player	
Movie File	.mxf (MPEG HD422, LPCM) *1, .mxf (MPEG HD, LPCM) *1 .f4v (H.264, AAC) *2, .mov (MPEG4, AAC) *2 .mov (H.264, AAC) *2, .mp4 (H.264, AAC or LPCM) *2 .m2ts (H.264, AC-3 or LPCM) *2
Still Picture File	.tiff, .tif, .png, .jpeg, .jpg, .jpe
Video Switcher	
Configuration	Input : 6 Primary Video inputs 1 M/E + 4 Keyer (2 x PinP, 2 x Title) + 2 Logo Output : PGM Output, PGM/AUX Output
Key Type	Luminance Key / Alfa Channel / Chroma key
Internal Media Playback	Data can be imported from a USB flash memory device.
Audio Mixer	
Configuration	Input: 6 Analog Monaural / 6 Stereo Embedded Audio inputs Mixing: 5 Stereo Mixing Output: PGM (Stereo) / MIX (Stereo)
Oscillator	100 Hz, 1 kHz, 10 kHz
Camera Control	
Supported camera	BRC series camera (VISCA protocol)
Text Typing Tool	
Input Language	10 languages English, Chinese(Simplified), Chinese(Traditional), Japanese, Korean, German, Spanish, Italian, Portuguese, French
Keyboard	Built-in software keyboard
General	
Power Requirements	DC 19.5 V, 7.5 A
Operating Temperature	5°C to 35°C (42°F to 95°F)
Dimensions (W x H x D)	415 x 102 x 336 mm *3 (16 3/8 x 4 1/8 x 13 1/4 inches)
Mass	Approximately 6.5 kg (14 lb 5.3 oz)

Video Signals	
Video Inputs	
HD/SD SDI	BNC (x4), 75 Ω, 1.5 Gbps, 270 Mbps SMPTE 292M, SMPTE 259M-C
Composite	Phono Jack (x2) VIDEO: 1.0 V <sub>p-p</sub> 75 Ω, negative sync
RGB	D-Sub Shrink 15-pin (x2) (Female)
HDMI	HDMI (Type A) (x2)
Video Outputs	
HD/SD SDI	BNC (x2) 75 Ω, 1.5 Gbps, 270 Mbps SMPTE 292M, SMPTE 259M-C
HD SDI	BNC (x1) 75 Ω, 1.5 Gbps, SMPTE 292M
RGB	D-Sub Shrink 15-pin (x1) (Female)
HDMI	HDMI (Type A) (x1)
REF Output	BNC (x1) Analog black burst signal NTSC: 0.286 V <sub>p-p</sub> , 75 Ω, negative sync PAL: 0.3 V <sub>p-p</sub> , 75 Ω, negative sync
Audio Signals	
Audio Inputs	
Analog Inputs 1-4	XLR/TRS Combo Type (x4) Ref. Level: +4 dBu, -20 dBu, -44 dBu Input impedance : 3.3 kΩ or more Mic. Power: +48 V On/Off
Analog Inputs 5-6	Phono Jack (x2) Reference input level: -10 dBu, Input impedance: 10 kΩ or more
Audio Outputs	
PGM Output	TRS phone (x2) Reference level: +4 dBu (10 kΩ load), Max. output level: +24 dBu, Output impedance: 150 Ω
MIX Output	Phono Jack (x2) Reference level: -10 dBu (10 kΩ load), Max. output level: +10 dBu, Output impedance: 470 Ω
Headphones	1/4" Stereo Phone Jack Type (x1) Max. power: 35 mW (x2) Impedance: 47 Ω
Other Interfaces	
LAN	RJ-45 (x2), 100BASE-TX, 1000BASE-T
USB3.0	USB (Type A) (x4), USB 3.0 equivalent
Panel	(i) 15.6-inch*4 High Brightness LCD 1920 x 1080 at 60 Hz (ii) 10.6-inch*5 High Brightness LCD 1280 x 768 at 60 Hz
Speaker	Built-In Speaker (x2) Size: 20 mm in diameter
Supplied Accessories	
AC Adapter (Operating Voltage 100 V - 240 V, 2.5 A, 50 / 60 Hz) (1), Anti Glare Films (2), VISCA connector 5-pin x1 (Male), VISCA connector 9-pin x1 (Male)	

\*1 at 1080/50i or 1080/59.94i  
\*2 up to 1920 x 1080 or up to 1080/30p  
\*3 Including the main display cover  
\*4 396.2 mm viewing angle, measured diagonally  
\*5 269.2 mm viewing angle, measured diagonally

## Dimensions

Units:mm (inches)



Planet Communications Asia PLC.

157 Soi Ramindra 34, Ramindra Rd., Tarang, Bangkok, 10230  
Tel: +66 2 792 2400 | Fax: +66 2 792 2499, +66 2 943 5771 | E-mail: sales@planetcomm.com



PlanetComm:

Distributed by

©2013 Sony Corporation. All rights reserved.

Reproduction in whole or in part without written permission is prohibited.  
Features, design, and specifications are subject to change without notice.

The values for mass and dimension are approximate.  
"SONY", "make.believe", and "AnyCast" are trademarks of Sony Corporation.